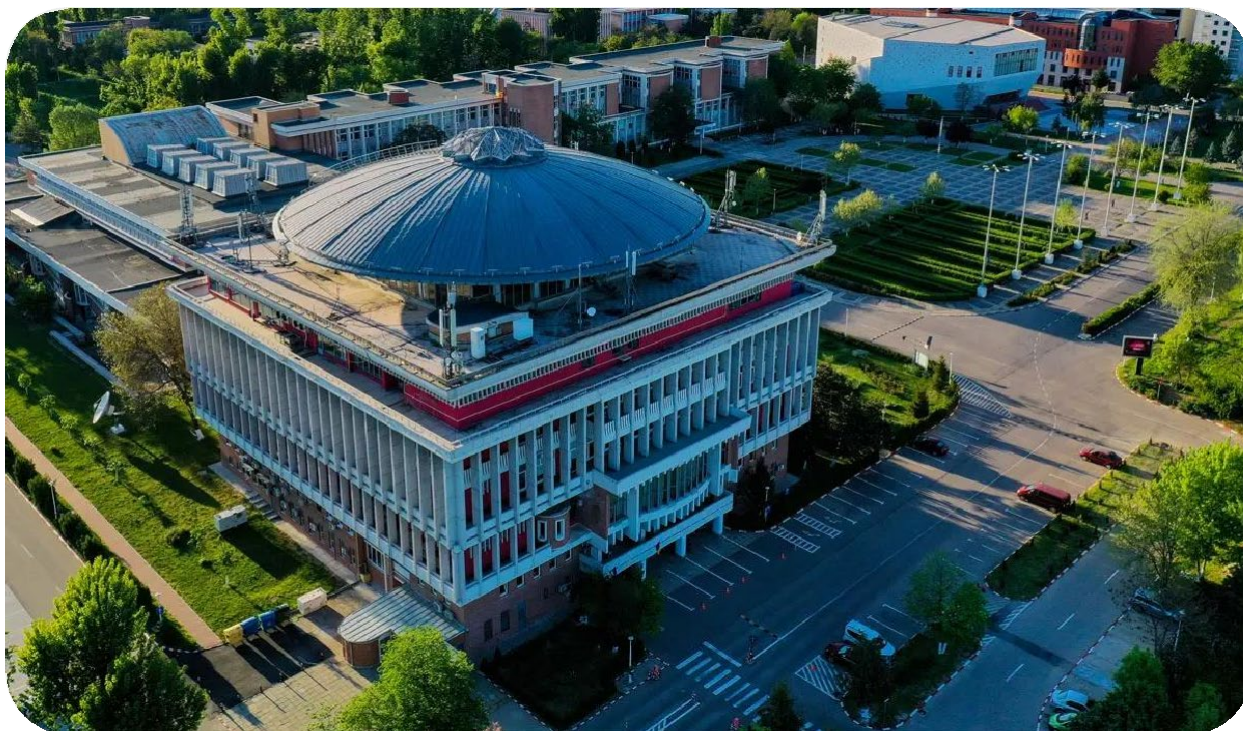


# 1<sup>st</sup> EELISA International Conference

*Becoming the engine that leads to a new future*

University POLITEHNICA of Bucharest, Romania  
4<sup>th</sup> - 6<sup>th</sup> of October, 2023



## PRACTICAL INFORMATION

## Meeting Venue

The EELISA events – final conference and meetings - will take place on the premises of the University POLITEHNICA of Bucharest (UPB) - 313, Splaiul Independenței, Sector 6, Bucharest(<https://international.upb.ro/>).

The events will be held in two modern buildings - the **Aula Conference Center** and the **Central Library** (Figure 1).

The two buildings situated next to each other can be reached either from Vasile Milea Street or Splaiul Independentei street, 10-minute walking distance from Grozavesti metro station, or from Iuliu Maniu Boulevard, 10-minute walking distance from Politehnica metro station (Figure 2).

The registration desk for participants is located at the entrance area of the Aula Conference Center. Volunteer students will guide the participants within the Campus, as well as in the two buildings.



*Aula Conference Center*



*Central Library*



UPB was founded in 1818 and it is the largest and most prestigious technical university in Romania. UPB conducts educational activities in engineering fields, organized in 15 faculties, for over 95 bachelor programs and 180 master programs. 48 study programs are thought in English, German or French. Well over 30,000 students are studying at all levels, out of each 2200 are doctoral candidates. The academic staff comprises over 1,300 teachers, 25% being full professors.

UPB research activities are among the top priorities of the university with two of the most important research hubs in the region – The occupy 50% of the entire surface Research Center for Advanced Materials, Products, and Processes - CAMPUS and the Research Center for Intelligent Products, Processes and Services - PRECIS. These buildings offer state-of-the-art facilities, and



*Figure 1. The Main Venue for the event*





Figure 2. UPB Campus Map

## Aula Conference Center

The welcome registration desk will take place in the Aula Conference Center on the 4<sup>th</sup> of October, between 16.00 and 18.30. The opening event on the 5<sup>th</sup> of October will also take place in the Aula.

The construction of the building consists of a single volume which comprises a basement, groundfloor and two upper floors. The main conference hall represents the core of the Aula, and all otherspaces being designed around it. The conference room, with a capacity of 1100 seats, is sized and equipped in accordance with modern standards. The participants can enter the room both from the ground and from the upper floors.

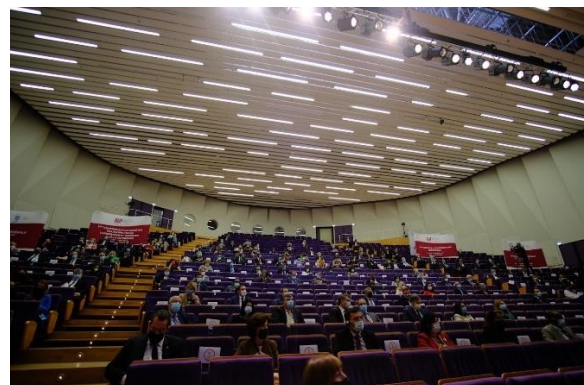


Figure 3. Photos from the AULA

## Central Library

The parallel sessions will be held within the premises of the Central Library – located one-minute walking distance from the Aula.

The proposed spaces in the building of the Central Library are distributed on all four floors. The building has three sections with specific destination rooms: reading rooms, rooms for study, rooms intended for computerized documentation, and several conference rooms specially designed to host conferences, training, workshops, and other types of scientific events.

The rooms are equipped with modular furniture that allows various arrangements, adapted to the characteristics of the event and the needs of the participants. The rooms are equipped with modular furniture that allows various arrangements: U-shaped, classroom, chevron, auditorium, etc. The modular furniture also allows working in small groups, if necessary. The rooms have a similar interior design, with an integrated sound system, equipped with a projection screen, video, microphones, wireless acoustic (ceiling speakers), and a mixer amplifier, perfectly adapted for both in-person and online events.

All rooms benefit from natural light and the building provides large spaces for networking on its halls (as seen in Figure 4).



Figure 4. Central Library - Conference Room and halls

## Registration Area

The registration desk will be located on the ground floor of the Aula Conference Center, in the main lobby. The Registration area has a capacity of 600 people. The space has a wide glazed surface, which ensures natural light and benefits easy access to the cloakroom.

## Technology

For the whole duration of the event, UPB provides free Wi-Fi – usernames and

passwords are distributed to the participants for access to a dedicated, safe high-speed network capable of handling 1200 simultaneous connections. Both buildings, as well as the lobbies, halls or technical cabins, have access to the Wi-Fi network and also have cable internet.

The spaces from both buildings provide performant technical equipment to project presentations electronically.

## Refreshments

For lunches, coffee breaks and networking, we propose the area on the ground floor of the Aula and the halls of the Central Library (4th floor). The area located on the ground floor of the Aula has a capacity of accommodating 600 people. The halls in the Central Library have the same design and can host more than 400 people each.

## Social Programme

The decision regarding the final location for the dinner venue on the 5<sup>th</sup> of October will be made together with EELISA staff.

For **cultural visits** we propose visits to the Palace of Parliament, or a guided tour of Bucharest.

### Bucharest Cultural Guided tour

The guide will present to the participants the history and relevance of important buildings in central Bucharest, including the old city area, followed by a visit to Bucharest Old Town.



[The Palace of Parliament](#) is the second largest administrative building in the world, after the Pentagon. It took 20,000 workers and 700 architects to build it. The palace boasts 12 stories, 1,100 rooms, a 328-foot-long lobby and four underground levels, including an enormous nuclear bunker. Today, it houses Romania's Parliament and serves as an international conference center. Built and furnished exclusively with Romanian materials, the building reflects the work of the best artisans in the country. The interior is a luxurious display of crystal chandeliers, mosaics, oak paneling, marble, gold leaf, stained-glass windows, and floors covered in rich carpets.

For the **Scientific program** we propose visits to the UPB research centres CAMPUS

and PRECIS.

*The Center for Advanced Research on New Materials, Products and Innovative Processes (CAMPUS)* is the UPB's advanced research & development center for multi - and inter -disciplinary technologies. CAMPUS is uniquely designed, both from the infrastructure point of view, as well as functionality. It holds a 7-storey state-of-the-art green and intelligent building with unconventional power sources, energy recovery, reuse of resources, and intelligent management systems. The building itself is a working lab. It integrates 42 advanced research and innovation labs, spread over more than 8,000 square meters.

*The Research Center for Innovative Products, Processes and Services (PRECIS)* has as general objective the extension of the current infrastructure and research activities of the University POLITEHNICA of Bucharest to achieve technology transfer and development of products, processes and next-generation services, mainly for industry and health. 28 advanced research and innovation labs, spread over more than 8,000 square meters, are focused on products, processes and services that include intelligent methods and technologies oriented on adaptive and innovative industrial processes, systems for increasing the quality of life, autonomous cognitive systems, cloud services and the future of the Internet, the mobile smart society and digital medicine.

## Accommodation and transportation

### Hotels

Participants are kindly requested to make their own accommodation arrangements.

The first 3 hotels are situated within walking distance from the university and the others are in the range of 7 km of the university.

Hotel	Website
Ambiance 3*	<a href="http://ambiance-hotel.ro">http://ambiance-hotel.ro</a>
Yesterday 3*	<a href="https://yesterday.ro/">https://yesterday.ro/</a>
Ibis Bucharest Politehnica 4*	<a href="https://all.accor.com/hotel/B1S0/index.en.shtml">https://all.accor.com/hotel/B1S0/index.en.shtml</a>
Orhideea Residence & Spa 4*	<a href="https://www.orhideearesidence.ro/">https://www.orhideearesidence.ro/</a>
Novotel Bucharest City Centre 4*	<a href="https://all.accor.com/hotel/5558/index.en.shtml">https://all.accor.com/hotel/5558/index.en.shtml</a>
Hilton Garden Inn Bucharest OldTown 4*	<a href="https://www.hilton.com/en/hotels/buhgigi-hilton-garden-inn-bucharest-old-town/">https://www.hilton.com/en/hotels/buhgigi-hilton-garden-inn-bucharest-old-town/</a>
Union Plaza Bucharest 4*	<a href="https://unionplaza.ro/">https://unionplaza.ro/</a>



Radisson Blue 5\*

<https://www.radissonblu.com/en/hotel-bucharest>

## Transportation

Bucharest has good connections to most European cities. International flights arrive at Henri Coandă International Airport (Otopeni), the largest airport in Romania, located about 19 km north of Bucharest center.

Participants are kindly requested to make their own international and local travel arrangements. [Transportation between Henri Coanda International Airport and the City.](#)

## Center

- **Taxi:** the cars are situated in a taxi station located at the exit of the Arrivals Terminal. Please use the "Taxi by request" desk at the airport.

## Public transportation:

- **STB - Bus** express lines 783 from Henri Coandă Airport offers daily service to the city center. This line runs day and night. The bus leaves every 15 minutes during the day and every 40 minutes during the night. For more information, go here: <http://www.bucharestairports.ro/en/transport/bus>
- **Train:** The train provides a fast connection between Henri Coandă Airport and Bucharest North Railway Station. See train schedules here: <https://mersultrenurilor.infofer.ro/en-GB/Itineraries>

## Moving around the city

Bucharest has a thorough public transportation system with buses and metro lines.

### Bus lines (STB)

Before getting on a STB vehicle, passengers must make sure they have a proper ticket for the respective public transport vehicle.

*The price for one metropolitan trip, available for 90 minutes, is 3 lei.*

The **Activcard** can be loaded with trips as well as with any type of passes, which can then be used in parallel. The nominal **Activcard** and the non-nominal **Activcard** can be purchased at any sales center and can be loaded at any sales center

and at the vending machines. Besides, the **Activ** nominal card can also be recharged through the online reloading platform.

The **Multiplu travel card** is designated for occasional passengers and can be purchased at any salecenter and at the vending machines.

For more information, go here: <https://stbsa.ro/eng/index>

### Metro lines (Metrorex)

The passengers' access to platforms is permitted only after tickets are purchased and validated by the fare collection system. The tickets can be purchased from the ticket points of sales in all stations. Price valid for two trips is 6 lei.

For more information, go here: [http://www.metrorex.ro/first\\_page\\_p1352-2](http://www.metrorex.ro/first_page_p1352-2)

### Taxi

- Meridian Taxi <http://meridiantaxi.ro/> +40 21 9888
- Speed Taxi [www.speedtaxi.ro/v3/](http://www.speedtaxi.ro/v3/) +40 21 9477
- Cris Taxi <http://cris taxi.ro/comanda-online> +40 21 9466
- Uber and Bolt are also available in Bucharest.

## Miscellaneous

### Internet

Wi-Fi is available at the venue. The network name is UPB-Guest and does not require anypassword.

### Currency

The local currency is "leu" – plural "lei" (RON). The approximate EUR/RON exchange rate as of 2023 is: 1 euro = 4.94 lei/RON. However, as the exchange rates may vary, participants are encouraged to check them before arriving in Romania.

### Contact

For any other questions related to the meetong, please contact Luciana MIHAI ([luciana.mihai@upb.ro](mailto:luciana.mihai@upb.ro)) or Diana ROBESCU ([diana.robescu@upb.ro](mailto:diana.robescu@upb.ro)).



## Other information

- **Temperature:** 17/ 7 degrees °C (October)
- **Time zone:** GMT+2
- **Electricity:** 220V, 50Hz Standard continental European dual round-pronged plugs
- **Emergency number:** 112
- **Romanian country telephone code:** +40
- **International calls from Romania:** 00 + country code + area code + telephone number
- **Smoking is prohibited in all indoor public areas.**
- Find more information about Bucharest at:  
<http://romaniatourism.com/bucharest.html>

### Alliance members



### In Association with



### Co-funded by

