

EELISA Catalogue of infrastructures

Ilaria Ciofini & Antoine Mercier – Université PSL

Alliance members



In Association with

Co-funded by



Static mapping

- No particular existing information about available facilities
 - UPM the sole institution within EELISA that has a catalogue

→ Need to make a mapping

- Survey to collect information from the research communities
 - Little view on the landscape before the survey
 - Approx 200 entries / almost all partners represented



Co-funded by the
Erasmus+ Programme
of the European Union

EELISA
European University



Dynamic mapping

- Regular update of the mapping
 - Bottom-up approach : anyone within EELISA can add an entry on the website
 - Light validation process to ensure quality of data per institution
 - ✓ **No centralised process**
- Connexion to existing catalogue
 - ✓ **No duplication of submission**



Co-funded by the
Erasmus+ Programme
of the European Union

EELISA
European University

EELISA catalogue of facilities

Filters [Clear All](#)

37 results

Search

Strategic Research Area

University

- Ecoles des Ponts ParisTech (ENPC)
- Friedrich-Alexander-Universität Erlangen-Nürnberg (FAU)
- Istanbul Technical University (ITU)
- Sant'Anna School of Advanced Studies (SSSA)
- Scuola Normale Superiore (SNS)
- Technical University of Madrid (UPM)
- Université PSL (PSL)

Activities

- Research activities
- Research, and others (industrial...) activities
- Research, Teaching activities
- Research, Teaching, and others (industrial...) activities
- Teaching activities

Load

Apply filters

Istanbul Technical University (ITU) x

Department of Mechanical Engineering

- Istanbul Technical University (ITU)
- Research, Teaching activities

Major facilities include a semi-anechoic room; fundamental mechanical vibration experiment setup; dynamic experiment setup for rotating machinery,...

Read more



Electro Optical Devices Laboratory



ITU Kozmo laboratory

- Istanbul Technical University (ITU)
- Research, Teaching activities

ITU/Kozmo-Lab is a sample preparation laboratory for cosmogenic isotope analysis. All types of rocks can be used in Cl-36 isotope analyzes. In ITU/Kozmo-Lab,...

Read more



Food Technology Laboratory

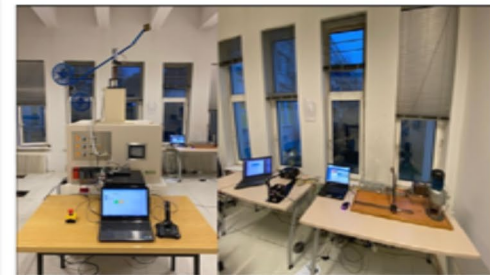


Thin film research laboratory

- Istanbul Technical University (ITU)
- Research activities

Our group has a vast set of equipment: electricla conductivity measuring, spectroscopy

Read more



Measurement, Instrumentation and Control



High Performance Computing Centre

Advanced material science and engineering Artificial intelligence Health

LOCATION
Scuola Normale Superiore (SNS)

Description

Technological and instrumental support to research groups, research centers and laboratories that, in order to carry out their research activities, need to use: - scientific calculation on high performance architectures - webservices, databases and web pages for the humanities

Way(s) of collaboration

Sharing rules are available here: <https://hpccenter.sns.it>



Giordano MANCINI

Get in contact



Type
A single or several equipment



Activities
Research, Teaching activities



Load
Almost fully used



More information
<https://hpccenter.sns.it>



Chemical and analytical methodologies

Advanced material science and engineering Food bioeconomy natural resources agriculture and environment Health

Natural Sciences

LOCATION
Université PSL (PSL)

Description

The SEISAD team develops different chemical and analytical methodologies and tools aiming to propose valuable insights in clinical and environmental diagnostics and therapy. The main equipment and facilities are: Capillary Electrophoresis coupled to UV-visible, fluorescence or mass spectrometry detectors Flow Chemistry 3D printing for microfabrication Miniaturised devices Optical Fluorescence Microscopes Potentiostats Scanning electrochemical microscope

Way(s) of collaboration

- Possible way(s) of collaboration is/are:
- For common research project related to EELISA
 - For free in the framework of an internship for instance (MSc or PhD level)
 - For free if a colleague comes under an Erasmus exchange (training...)



Laura TRAPIELLA ALFONSO

Get in contact



Type
A single or several equipment



Activities
Research activities



Load
Almost fully used



More information
<https://iclehs.fr/research/seisad/>



Contact making

A catalogue has to be more than a “vitrine”

➤ Develop a simple contact form to Support the start of collaborations

✓ Available for EELISA members and externals



Co-funded by the
Erasmus+ Programme
of the European Union

EELISA
European University



Contact form for EELISA facilities

This tool automatically posts a request to the scientific manager of the facility. The acceptance of the request and all further exchange are under the full responsibility of the scientific manager. Posting a request does not automatically imply its acceptance.

Identify yourself

About you

First name

Last name

Position

Are you part of one of the EELISA member?

Yes No

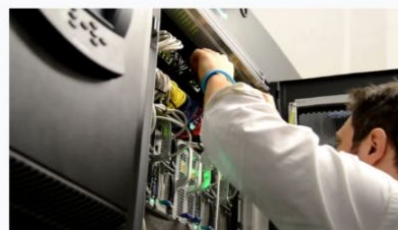
[Login to your account](#)

Select your host institution

- Ecoles des Ponts ParisTech (ENPC)
- Friedrich-Alexander-Universität Erlangen-Nürnberg (FAU)
- Istanbul Technical University (ITU)
- Politehnica University of Bucharest (UPB)
- Sant'Anna School of Advanced Studies (SSSA)
- Scuola Normale Superiore (SNS)
- Technical University of Madrid (UPM)
- Université PSL (PSL)

Laboratory/institute

login



High Performance Computing Centre

LOCATION

Scuola Normale Superiore (SNS)

Giordano MANCINI

E-mail address

Please enter a valide address. It will be used for all further correspondence with the facility manager.

Define the scientific objects

Specify the period you would prefer for the visit

From

jj/mm/aaaa



To

jj/mm/aaaa



Provide a brief description of the scientific aim of the visit

Please clearly identify the devices you would like to access and the work planned

Enter a description...

Max 3000 characters, excluding spaces

Any relevant additional scientific information can be uploaded here

Drag & Drop your files or [Browse](#)

Powered by FQ/NA

Send request



Grants

- Visiting a colleague to use/learn a facility can be considered as an Erasmus Mobility
- Contact form helps administration for the paperwork
- Funding from each institution (no centralised process)
- When the catalogue Will be live, all members Will tell whcih funding and the available budget to Support mobility



Co-funded by the
Erasmus+ Programme
of the European Union

EEISO
European University

Your local contacts

- BME: László Gergely VIGH (vigh.laszlo.gergely@emk.bme.hu)
- ENPC: Mustafa SEVIMLI (mustafa.sevimli@enpc.fr)
- FAU: David SCHKADE (david.schkade@fau.de)
- ITU: Assoc. Prof. Dr. Funda KARBANCIUGLU GÜLER (karbanci@itu.edu.tr); Assoc. Prof. Dr. Bihter ZEYTUNCU GÖKOĞLU (bihtzeytuncu@itu.edu.tr)
- SSSA: Sara BARSANTI (Sara.Barsanti@santannapisa.it)
- SNS: Darya KRASILNIKOV (darya.krasilnikov@sns.it); Pasqualantonio Pingue (pasqualantonio.pingue@sns.it)
- PSL: Antoine MERCIER (antoine.mercier@chimieparistech.psl.eu)
- UPB: Catalin NEGRU (catalin.negru@upb.ro)
- UPM: Isabel SALGUEIRO (isabel.salgueiro@upm.es)



Conclusion

Bottom-up feed of facilities

+

Contact making

+

Mobility grants

=

Building Sustainable Cooperation in EELISA

The screenshot displays the EELISA catalogue of facilities website. At the top, the EELISA logo and 'EELISA catalogue of facilities' are visible, along with a 'login' button. Below the header, there are 'Filters' and 'Clear All' buttons, and a search bar. The main content area shows a grid of facility listings. The left sidebar contains several filter categories: 'Strategic Research Area' (with sub-items like 'Advanced material science and engineering', 'Artificial intelligence', etc.), 'University' (listing various institutions like ENPC, FAU, ITU, etc.), 'Activities' (listing 'Research activities', 'Research, and others (industrial...) activities', etc.), and 'Load' (listing 'Almost fully used', 'Between 50% to 80% used', etc.). The grid of listings includes: 1. 'Metal additive manufacturing printer with SLM Powder bed technology' by Technical University of Madrid (UPM). 2. 'Chemical and analytical methodologies' by Université PSL (PSL). 3. 'Metalorganic vapour-phase epitaxy (MOVPE) reactor' by Technical University of Madrid (UPM). 4. 'Laser micromachining ML100' by Technical University of Madrid (UPM). 5. 'EBSD detector for crystallographic analysis of metal samples' by Technical University of Madrid (UPM). 6. 'Laser nano and micromachining lab' by Technical University of Madrid (UPM). Each listing features a representative image, a title, a brief description, and a 'Read more' button.



Co-funded by the
Erasmus+ Programme
of the European Union

EELISA
European University

THANK YOU!



Co-funded by the
Erasmus+ Programme
of the European Union

EELISA
European University